

Educational Innovations Project

UCSF Internal Medicine Residency Training Program

Program Director: Harry Hollander, MD.
Interim Chair Department of Medicine: Talmadge E. King Jr., MD. / Associate for Education Chair: Patricia A. Cornett MD.
Designated Institutional Official: Robert Baron, MD. / Chief of the Medical Service: Robert Wachter, MD.
Associate Program Directors: Elizabeth Harleman, MD. / Sharad Jain, MD. / Katherine Julian, MD.
Jeff Kohlwes, MD. / Tracy Minichiello, MD.
Residency Faculty: C. Bree Johnston, MD. / Bradley Sharpe, MD. / Arpana Vidyarthi, MD.
Patricia O'Sullivan, Ed.D / Leila Alpers, MD.
Alice Chen, MD. / Rina Shah, MD.
Division Administrator: Sue Sheehan

APDIM April 2007
San Diego, California

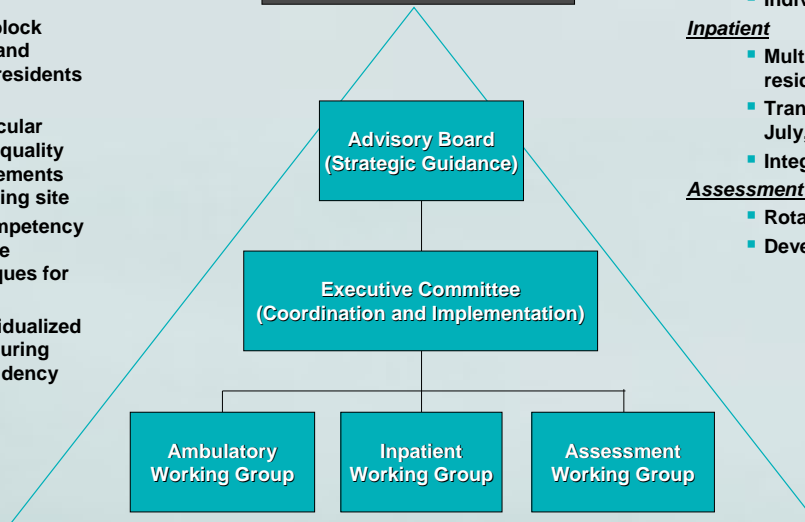
Methods

- Implementation of block rotation for PGY2s and PGY3s, separating residents into 2 cohorts
- Refinement of curricular delivery coupled to quality and system improvements customized by training site
- Development of competency goals and innovative assessment techniques for each rotation
- Delineation of individualized training pathways during latter phases of residency

Goals

- To create distinct inpatient and ambulatory educational environments with competency mapping and embedded quality improvement activities
- To continue individualizing resident education in a learner-centered manner

EIP Governance



Timeline for Implementation

Ambulatory

- Resident Firm System at UCSF/Mt. Zion, VA: July, 2007
- Chronic Care Collaborative Model at UCSF/Mt. Zion, SF General Hospital: July, 2007
- Individualization of PGY3 ambulatory continuity experience: July, 2008

Inpatient

- Multidisciplinary Team Training at UCSF Hospital: launched with residency-specific revision July, 2007
- Transitions of Care linked to Reynolds Foundation Geriatrics grant at VA: July, 2007
- Integration of Simulation/Patient Safety Training at VA: July, 2009

Assessment Redesign

- Rotation competency mapping: launched
- Development of comprehensive web-based evaluation portal: July, 2008

Institution-Specific Challenges

Heterogeneity of trainees

- 3 different training tracks
- 5 elective Areas of Distinction

Multiple training sites

- Distinct, uncoordinated information systems
- Different institutional priorities and culture
- Diversity of patient populations and needs