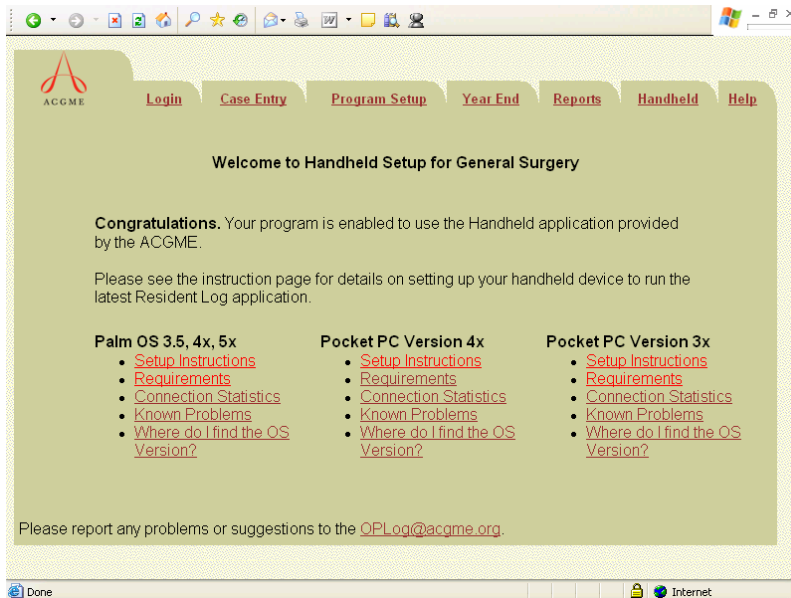




Handheld

The handheld option allows residents to put software (provided by ACGME) on their PDA's or Pocket PC's to enable them to enter cases into it and sync them to ACGME.



To purchase the handheld application your computers and handheld devices should meet the following requirements.

The handheld application will run on any handheld device using
Palm OS 3.5, 4X, 5X or WinCE 3.0
Device with at least 2 meg of free memory
Desktop PC running Windows 95/98/2000/XP/NT
Desktop PC with Internet Access
Afaria 5.0 (Palm) or Scout Client 4.2 (WinCE) (Provided by ACGME on first Sync)

We are currently developing the WinCE version for Obstetrics and Gynecology, Radiation Oncology, and Allergy and Immunology. We will post a notice on the Resident Case Log System when it will be available.

The application is not compatible with Palm OS 6.0 at this time.

There is an annual (academic year) \$25 fee for each resident using the handheld application. The institution will be billed through the standard ACGME invoicing policy. The Designated Institutional Official (DIO) will receive the invoice.

The handheld request form can be found at:

http://www.acgme.org/acWebsite/ResData/resD_palmActivationForm.pdf

If you have this option enabled for your program, the residents will still be able to enter cases via the website.

©2005 Accreditation Council for Graduate Medical Education (ACGME). No part of this work may be reproduced or distributed in any form or by any means without ACGME's prior written approval. This document contains Confidential Information.

Requests for permission to make copies should be made to the following address:
ACGME, 515 N. State Street, Suite 2000, Chicago, IL 60610

Information in this document is subject to change without notice. ACGME is not liable for errors or omissions appearing in this document.