

WELCOME PAGE

The Welcome Page (Figure 5) is the starting point after the initial login. It will confirm that you are logged on and will inform you of changes or issues. It will also provide you with the necessary tabs (or Sections) to perform your program setup and data entry.

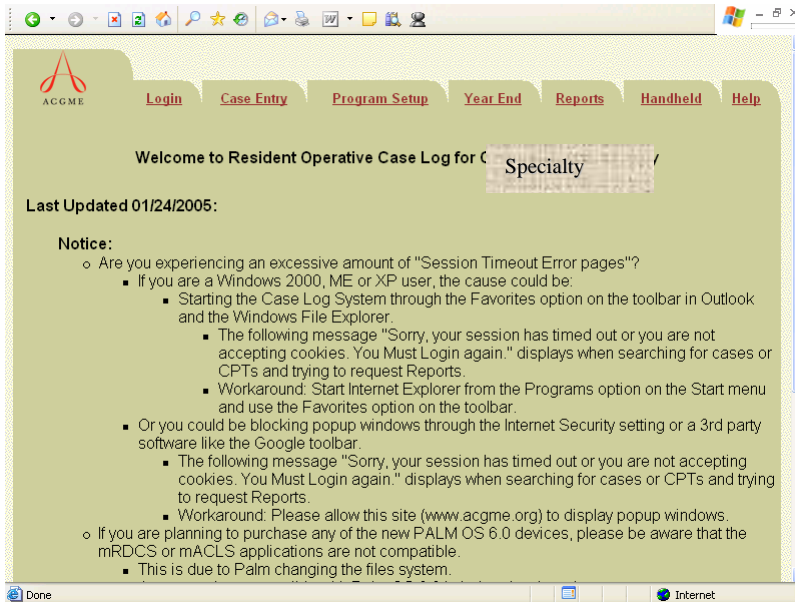


Figure 5: Welcome Page

The Tabs at the top of the page are the available options. Depending on the level of user access allowed (see logon section; logon types), certain tabs may not be available.

Login: Brings you back to the initial login screen. You must re-enter your ID and password to gain access back into the system.

Case Entry: This screen provides the ability to add, view, and modify individual records entered in the program. This screen also allows you to download procedures and update procedure year of procedures already entered into the system.

Program Setup: This screen allows the Program Director/Administrator to perform initial setup and ongoing maintenance of the database such as add attending (supervisors), institutions (locations), issue userid and password for residents, add new residents, add rotations and initial resident transfer requests.

Year End: Allows the Program Director/Administrator to set the correct reporting year and identify graduating residents so annual operative log reports can be generated.

Reports: Program and resident reports are generated from this screen.

Handheld: This option allows residents to enter procedures on a handheld or pocket pc to upload to ACGME. See handheld request form for details.
http://www.acgme.org/acWebsite/ResData/resD_palmActivationForm.pdf

©2005 Accreditation Council for Graduate Medical Education (ACGME). No part of this work may be reproduced or distributed in any form or by any means without ACGME's prior written approval. This document contains Confidential Information.

Requests for permission to make copies should be made to the following address:
ACGME, 515 N. State Street, Suite 2000, Chicago, IL 60610

Information in this document is subject to change without notice. ACGME is not liable for errors or omissions appearing in this document.